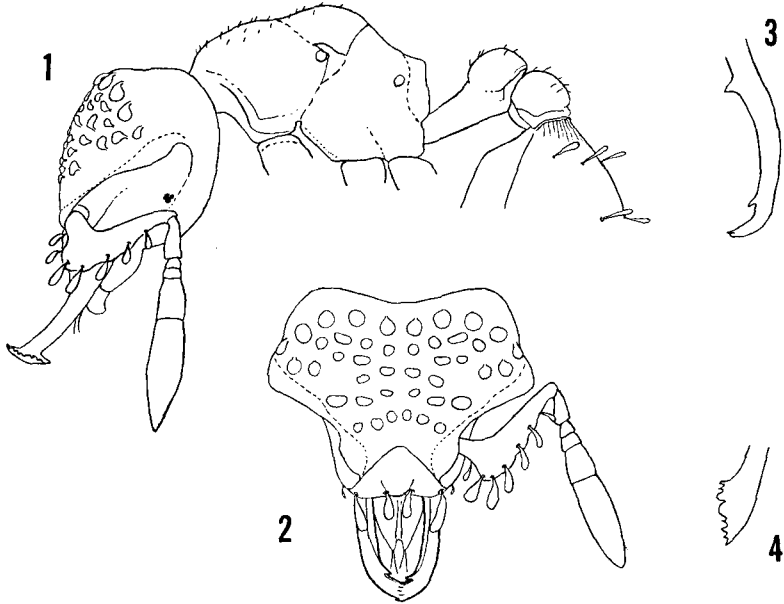


angular lamellae guarding the concave declivity, the declivity reaching far up towards the metanotal groove.

Petiole node distinct from its anterior peduncle, as seen from above transverse, subrectangular, about twice as broad as long. Postpetiole



Figures 1-4. *Epitritus laticeps* sp. nov., paratype worker. Fig. 1, side view of head and body. Fig. 2, dorsal full-face view of head and mandibles. Fig. 3, oblique dorsal view of opened left mandible. Fig. 4, ventral inside oblique view of apical group of teeth or denticles. Drawn by F. A. McKittrick.

much broader than petiole and more than twice as broad as long, convex above with a shallow median impression, articulated to the entire width of the anterior gastric margin. Spongiform appendages limited to narrow posterodorsal lamelliform collars on both nodes, and absent from anteroventral face of gaster. Gaster laterally submarginate at the extreme base; short, coarse costulae fade caudad into superficial, indistinct reticulation reaching nearly to the midlength of the basal segment; gaster otherwise shining and smooth.

Body reticulate-punctulate, opaque, except for the gaster, the inner mandibular surfaces and the labral lobes, which are smooth and shining. Specialized pilosity, especially the large orbicular, cochlear hairs