

Figure 1. Typical "shiny" *Dorymyrmex pocahontas* queen of field colony # 1 (1977), Scale bar 1 mm

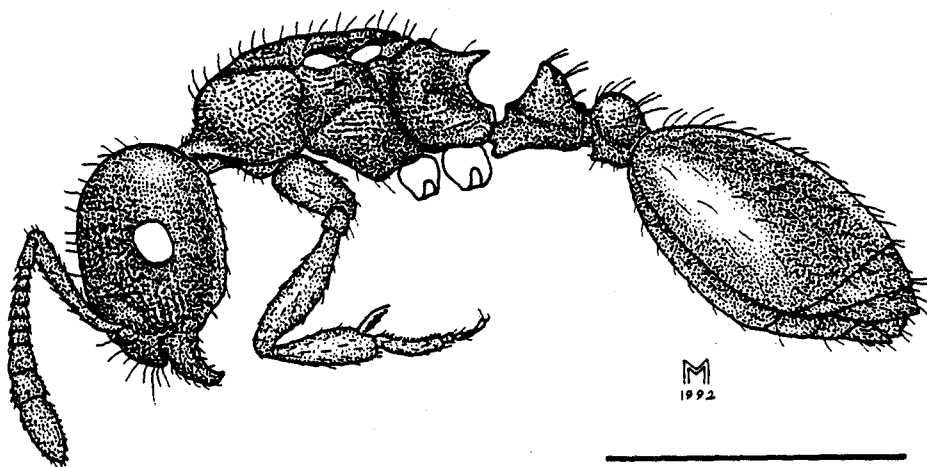


Figure 2. "Dull" gyne from *D. pocahontas* field colony # 3 (1977). "Dull" gynes were originally misidentified as host species gynes (Buschinger 1979), Scale bar 1 mm

closely resembled what one might expect queens of the brownish workers would look like ("dull" phenotype, e.g., the gynes in field colony # 3, Figs. 2, 3).

We must stress here that "dull" gynes represent a range of phenotypes from such closely resembling the "shiny" specimens (petiole a little less steep, sculpture a bit rougher) to such morphologically similar to gynes of *Leptothorax* C, i.e. strongly sculptured, much smaller and lighter in coloration, and with shorter hairs than the "shiny" gynes.