

Table 6. *T. sp. d* colony size and composition.

Nest #	Eggs	Larvae	Workers	♀-Pupae	♂-Pupae	Males	Ergatoid ♀
1	10	37	11	3	0	0	1
2	5	23	8	1	0	0	1
3	0	9	3	0	0	0	1

Ergatoid Queens

No morphologically normal alate or dealate queens occur in any of the Malagasy *Terataner* species. Colonies are almost always monogynous with a single reproductive, an ergatoid queen, that differs only slightly from corresponding workers (Fig. 2). This remarkable reproductive lacks both wings and ocelli, and has an almost normal, worker-like thorax. The ergatoid queen is externally distinguishable from workers only by very subtle characters (e.g., small spines or tubercles below the mesonotal groove; a unique pattern of rugae on the sides of the pronotum) that vary among species. Ergatoid queens have ovaries bearing two to three

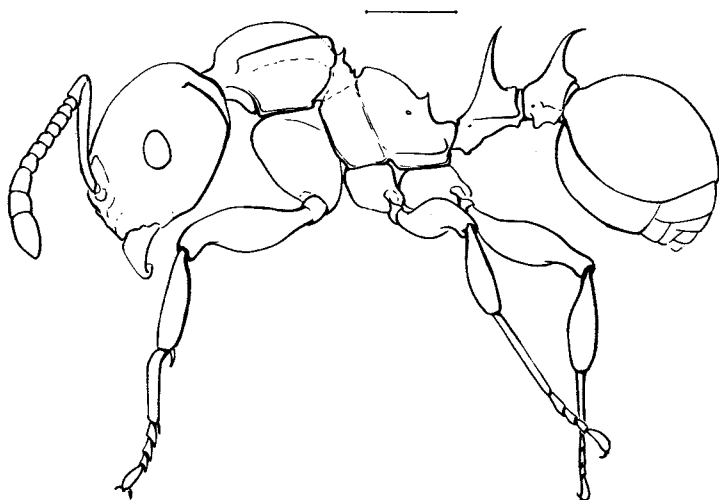


Figure 2. Ergatoid queen of *Terataner alluaudi*.
Scale line, 1.0 mm.