

ovarioles, and each ovariole contains a string of oocytes undergoing oogenesis. In contrast, no oocytes are present in workers.

### *Males*

Males were rare in colonies, never surpassed four per colony, and were found in only three of the six species. *Terataner* males are morphologically distinctive (Fig. 3). The alitrunk is unusually shaped such that the wings are attached abnormally low on its sides, yet the male is still capable of flight. The middle pair of legs is reduced in size relative to the other two pairs of legs. Males were present in nests throughout this study (July, August, February and March). When nests were opened for analysis, males sometimes took flight. It is unknown whether males mate inside nests or whether they mate in the field with ergatoid queens.

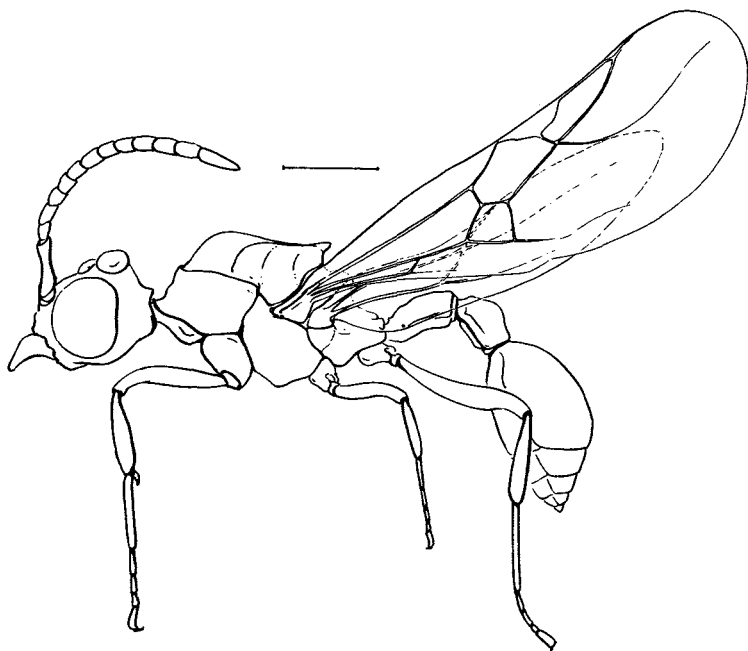


Figure 3. Male of *Terataner alluaudi*.  
Scale line, 1.0 mm.