

punctured, the interspaces wider than the punctures. Metapleura transversely and sharply striate. Triangular area of the epinotum closely and longitudinally striato-rugose, the rest of the segment with large rugae curved laterad from the middle line, the bottom of the declivity with a triangular area which is irregularly rugose. Abdomen moderately shining, the sternites and the fifth tergite with a sparse puncturation at the sides. Pygidial area finely reticulate-punctate, one and a half times

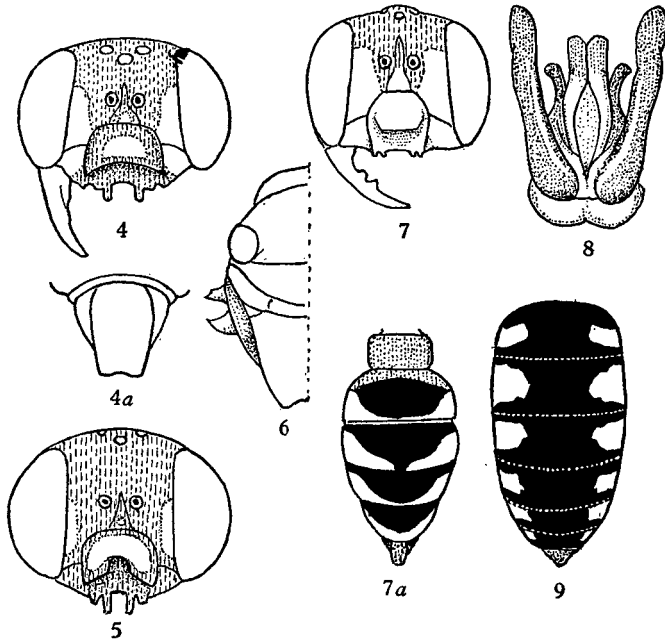


Fig. 4. *Cerceris pseudoproteles*, ♀, $\times c. 6\frac{1}{2}$.

Fig. 4a. *C. pseudoproteles*, pygidium, $\times c. 6\frac{1}{2}$.

Fig. 5. *C. proteles*, ♀, $\times c. 10\frac{1}{2}$.

Fig. 6. *C. albispinosa*, ♀, left half of thorax, $\times c. 10\frac{1}{2}$.

Fig. 7. *C. manifesta*, ♀, $\times 8$.

Fig. 7a. *C. manifesta*, ♀, $\times 6$.

Fig. 8. *Astata tropicalis*, ♂, genitalia, $\times 32$.

Fig. 9. *Stizus imperialis conspicuus*, ♂, abdomen, $\times c. 3\frac{1}{2}$.

longer than wide, almost parallel-sided, the apical margin arcuately emarginate. Median area of the clypeus with a semi-cylindrical lamina, free to its base, one-fourth wider in front than long at the sides, its anterior margin arcuate; the apical margin has two long blunt teeth, and laterad of them two short angular teeth. Interocular distance on the vertex equal to the length of the first five joints of the flagellum plus half of the sixth; the inner orbits slightly divergent below. Second joint of the flagellum three times longer than wide at the apex and nearly twice as long as the following joint. Posterior ocelli one-third farther from the eyes than from each other. First tergite feebly convex, one-third wider