

laterad on the second, and all becoming yellow on the margins ventrad; sixth and seventh tergites flavo-ferruginous. First sternite black, excepting the lateral and posterior margins, the second black on the basal half, the second to fifth yellow at the sides, pale ferruginous in the middle and with blackish margins at the base and apex; sixth sternite pale yellow, the median platform pale red. Scapes pale yellow below, black above, the flagellum black. Legs pale lemon yellow with black streaks on the underside of the femora, not reaching the apex on the hind pair; the tibiae also with black streaks below, the anterior tibiae black on

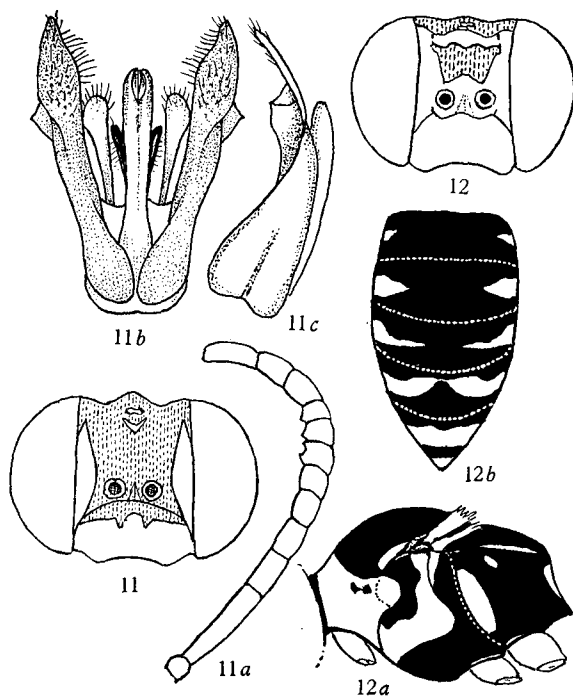


Fig. 11. *Bembix rava*, ♂, head, $\times c. 6$.
 Fig. 11a. *B. rava*, ♂, flagellum, $\times c. 14$.
 Figs. 11b, c. *B. rava*, ♂, genitalia, $\times 16$.
 Fig. 12. *B. brachyptera*, ♀, head, $\times c. 6$.
 Fig. 12a. *B. brachyptera*, ♀, thorax, $\times c. 2\frac{1}{2}$.
 Fig. 12b. *B. brachyptera*, ♀, abdomen, $\times 3$.

the upperside excepting at the apex. Wings hyaline, the veins dark brown. Head and thorax with a long, erect and white pilosity, the clypeus with decumbent silvery pubescence. Abdomen with a decumbent, white and inconspicuous pubescence. Thorax dull, finely, shallowly and obliquely reticulate-punctate, the sides of the epinotum not so closely reticulate and with a larger puncturation. Tergites 1-6 not quite dull, closely and obliquely punctured, the seventh shining and sparsely punctured. Strenites shining, the first and second with large shallow punctures, the