

microscopically and widely reticulate (50 diameters). Head with a decumbent greyish pubescence, the mesopleura just below the tegulae with a patch of silvery pubescence, and the upperside of the hind coxae with similar pubescence. Clypeus very short, the anterior margin widely and arcuately excised in the middle. Face convex, in the middle four times wider than one eye. Eyes considerably narrowed ventrad and slightly divergent below, the cheeks long, as long as the scapes. Temples in the middle as wide as the eyes. All the joints of the flagellum a little longer than wide, the second not much longer than the first. Posterior ocelli three and a half times farther from each other than from the eyes. Interocular distance on the vertex nearly equal to the length of the first four joints of the flagellum. Pronotum, including the neck, three-fifths wider behind than long, the dorsal face merging gradually into the anterior face, narrowed cephalad, strongly convex lengthwise and

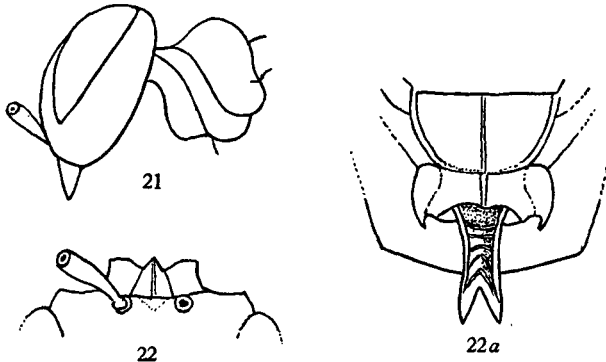


Fig. 21. *Miscophoides minutus*, ♀, $\times 45$.

Fig. 22. *Oxybelus eburneoguttatus*, ♂, clypeus seen from above, $\times c. 27$.

Fig. 22a. *O. eburneoguttatus*, ♂, posterior half of thorax, $\times c. 27$.

moderately so transversely, not subtuberculate in the middle as in *M. handlirschi* Brauns. Mesonotum twice as wide as long, nearly twice as long as the scutellum, which is twice as wide as long. Dorsum of the epinotum as long as the declivity, considerably narrowed caudad, with a feebly impressed longitudinal line in the middle. First tergite subtriangular or much narrowed towards the base, one-third wider behind than long. Apical tergite broadly triangular. Venation of the forewing as in *M. handlirschi*, consisting only of the costal, subcostal, median and anal veins and a triangular pterostigma; the distance of the latter from the apex of the wing is three-fourths greater than its distance from the base.

♂. 2.1 mm. long. Black. Mandibles ochreous. Underside of the scapes and their apex above, the upperside of the first two joints of the flagellum, tibiae and apical fourth of the fore and middle femora and the basitarsi of all the legs, yellowish white, the remaining tarsal joints pale fuscous. The femora brown. Hind margin of the pronotal tubercles yellowish. Wings hyaline, the veins pale ochreous. Sculpture and pubescence as in the ♀, but there is a little silvery pubescence on the hind