

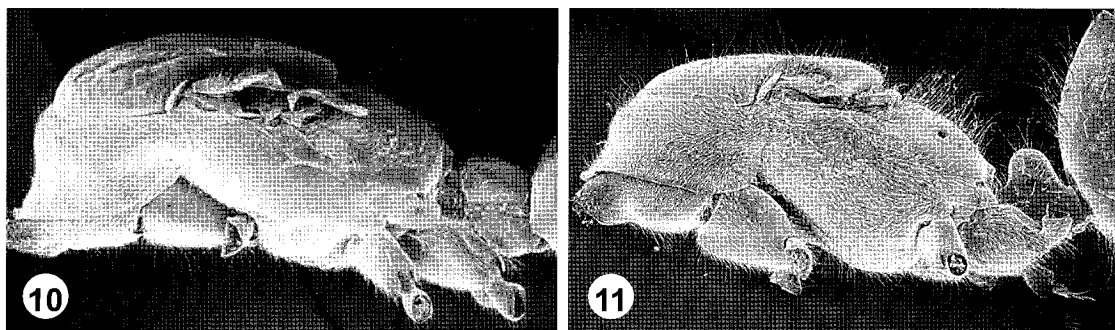
Figs. 8, 9. Head in full frontal view of soldier. 8. *hobbyi*; 9. *maryatae*.

1899: 494; *Cladomyrma andrei*, Emery, 1925: 45). Syntype queen, BORNEO: Indonesia, South Kalimantan, Poulo Laut, Doherty; MCSN [examined].

Cladomyrma cryptata Agosti, 1991: 304. Holotype queen, BORNEO: East-Malaysia, Sabah, Poring Hot Springs, #815, Ulrich Maschwitz, ex *Calerya* (= *Millettia*) *nieuwenhuisii*; BMNH. New syn.

DIAGNOSIS: **Major worker.** AL 0.84–1.64, HL 0.86–1.42, HW 0.76–1.32, EL 0.16–0.30, SL 0.38–0.68, CI 89–98, EI 21–42, SI 44–53 (n = 8). Generally larger body size; pilosity and dorsum of alitrunk and gaster variable, generally short and not very dense; generally reddish dark brown to dark brown; clypeus angulate; gastral pubescence thin,

hair at least as long as distance between their insertions. **Minor worker.** AL 0.64–1.00, HL 0.59–1.04, HW 0.52–0.78, EL 0.13–0.22, SL 0.29–0.46, CI 83–95, EI 23–27, SI 55–66 (n = 8). Generally larger body size; pubescence on gaster dense, short, and appressed; metapleural gland orifice large. **Queen.** AL 2.08–2.56, HL 1.30–1.46, HW 1.02–1.24, EL 0.47–0.54, SL 0.61–0.78, CI 76–86, EI 40–47, SI 58–66 (n = 17). Large body size (AL > 2.0 mm); body color usually dark brown to black (rarely uniform yellowish); head distinctly bicolored with genae and clypeus lighter than remainder of the head capsule; metapleural gland orifice large but covered with a bunch of hairs inserted ven-



Figs. 10, 11. Alitrunk and petiole of queens in lateral view. 10. *petalae*; 11. *maryatae*.