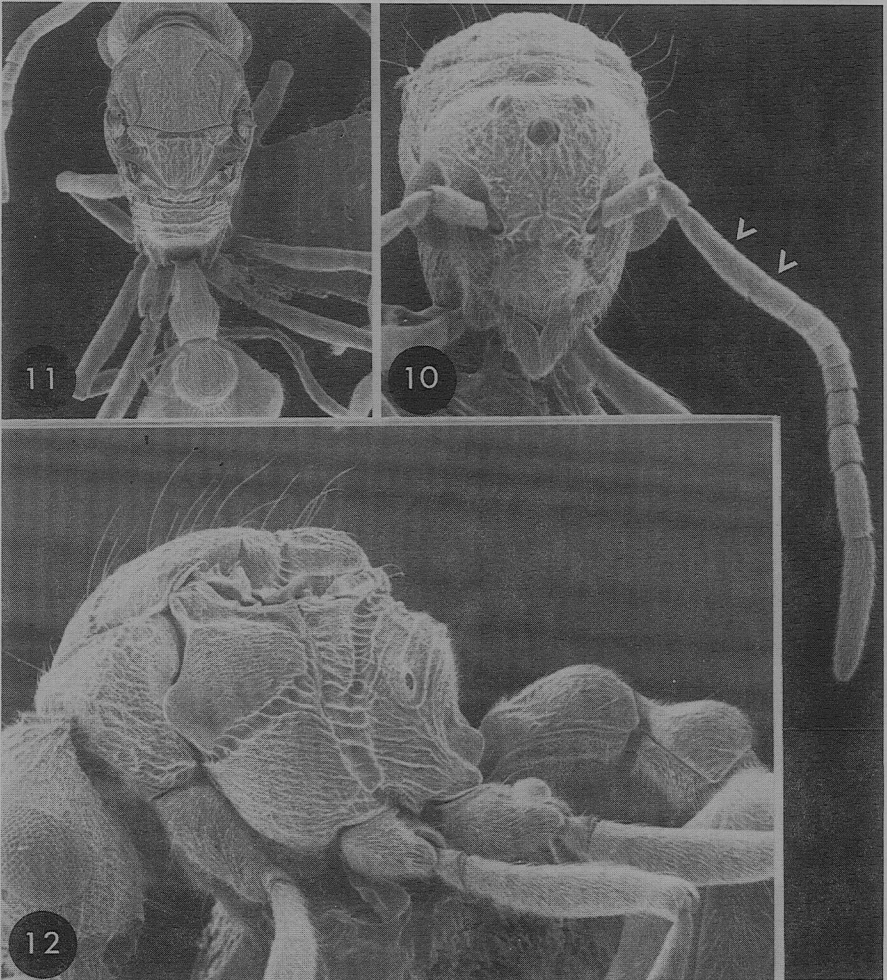


planes which could be specified normal to the viewing axis in a scanning electron micrograph and within its depth of field.

For this reason absolute scale is indicated below by stating in each figure caption the measurement for a relevant dimension of the specimen illustrated; usually Head Width, Pronotum Width or Weber's Length of the mesosoma, as defined in Table 1. These were determined directly from the specimens themselves, using an optical stereomicroscope and eyepiece ruler. Such indications of scale, as defined, apply only to the dimensions specified, regardless of what else is illustrated. This technique is accurate and relevant, and its use elsewhere is recommended. Editorial requirements that such micrographs must 'carry scale lines are not justified in light of these facts.



Figures 10–12. *Dacetinops concinnus*, male, Quoin Hill, Sabah, standard views (wings removed). HW (across eyes) 0.83 mm; scutum width 0.71 mm; WL 1.33 mm.