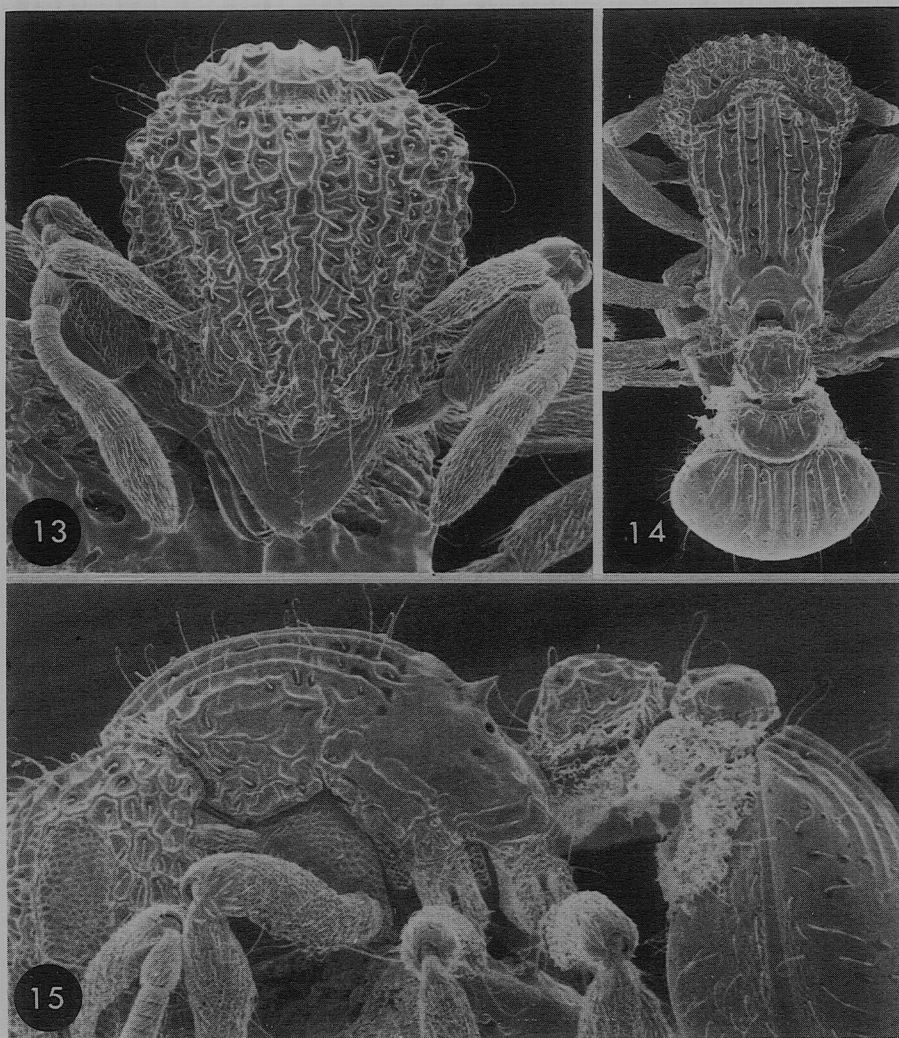


Most electron microscopes can print a scale or magnification factor (e.g.  $20\times$ ) on the pictures they generate. These are also subject to the problem reviewed above, and are, at best, only approximate, even if the relevant plane is known. Magnification factors in work of this kind acquire error if illustrations bearing them are reproduced at a size other than that of the finished original, and are almost meaningless in any case. A user of Figure 19 is much better served by knowledge that the specimen illustrated has a Head Width of 1.0 mm, than that it is magnified  $45\times$  in the illustration!



Figures 13–15. *Dacetinops cibdelus*, worker, 'Timber Track', New Guinea, standard views. HW 0.58 mm; Pronotum width 0.43 mm; WL 0.74 mm.