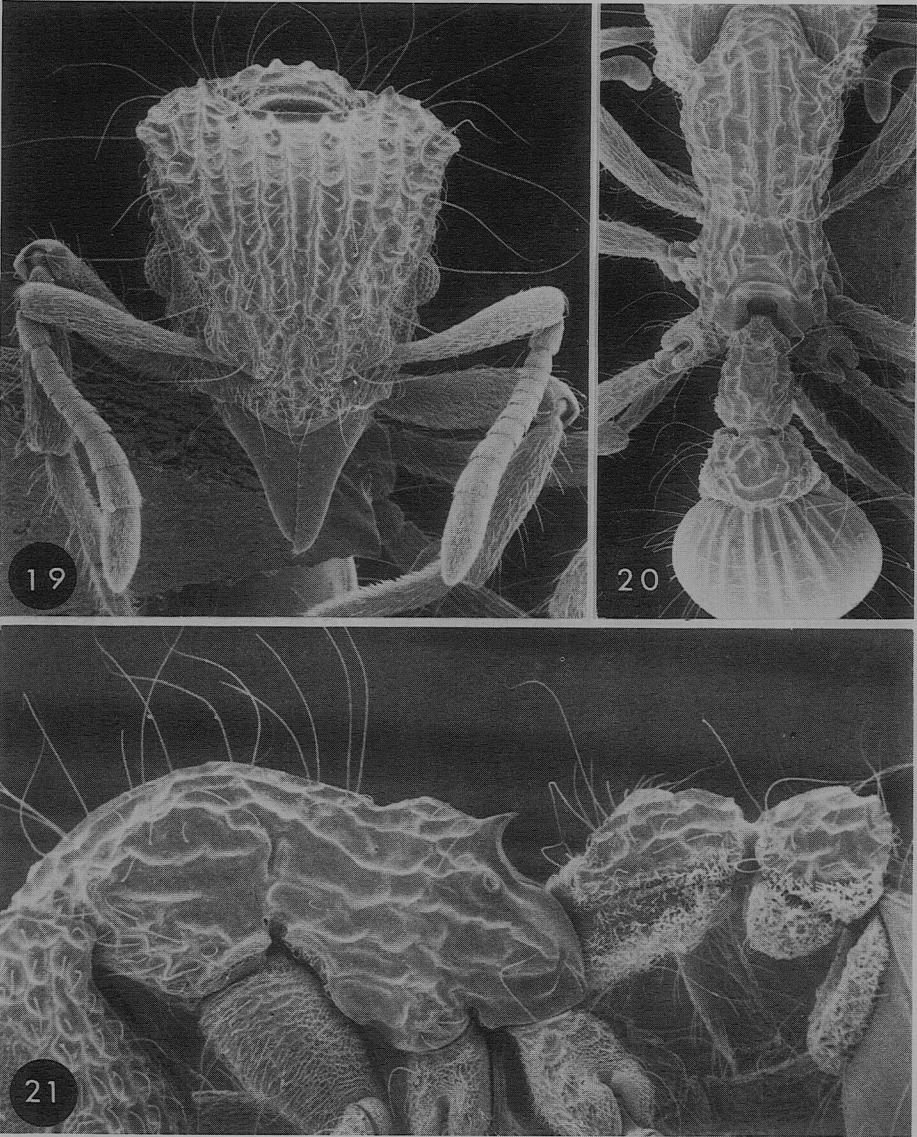


- and considerably less numerous (Figs. 19–21). (Known only from Borneo; widespread there). . . . . *D. concinnus* Taylor
- 5(1) *a* Propodeal spines distinctly developed (Fig. 15); antennal scapes short, SI 64–66 . . . . . *D. cibdelus* Brown & Wilson
- b* Propodeal spines lacking, or at most present as minute vestiges (Figs. 24, 27); antennal scapes longer, SI 72–75 . . . . . 6



Figures 19–21. *Dacatinops concinnus*, worker, Quoin Hill, Sabah, standard views. HW 1.0 mm; Pronotum width 0.70 mm; WL 1.48 mm.