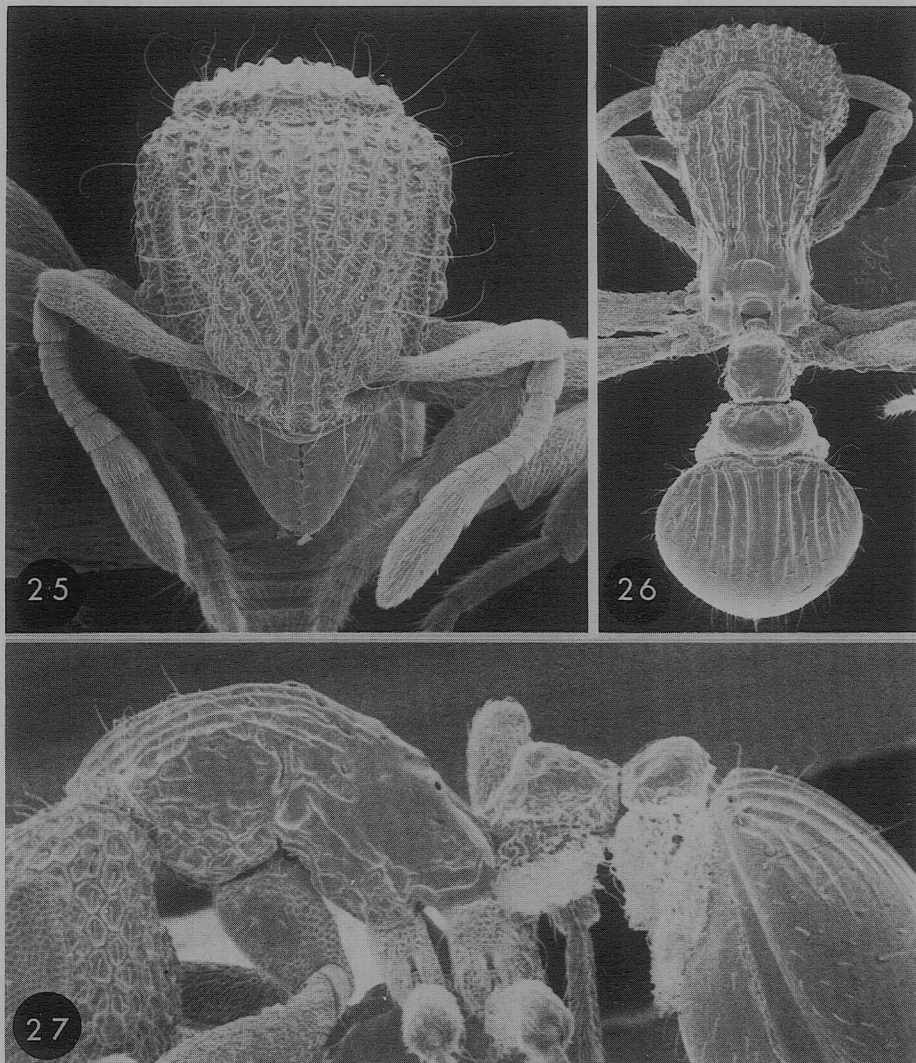


*Dacetinops cibdelus* Brown and Wilson (Figs. 13–15)

*Dacetinops cibdela* Brown and Wilson, 1957, p. 4, figs. 1–3, worker, female. Type locality: PAPUA NEW GUINEA: *Lower Busu River*, near Lae (6°43' S., 147°01' E.). Holotype in MCZ (examined).

*Distribution, material examined.* Known from various localities north of the main axial cordillera of New Guinea, eastwards from near Madang (5°13' S., 145°48' E.) to just south of Kokoda (8°52' S., 147°45' E.). Ecology of the type-locality is



Figures 25–27. *Dacetinops ignotus*, holotype worker, standard views. HW 0.60 mm; Pronotum width 0.44 mm; WL 0.78 mm.