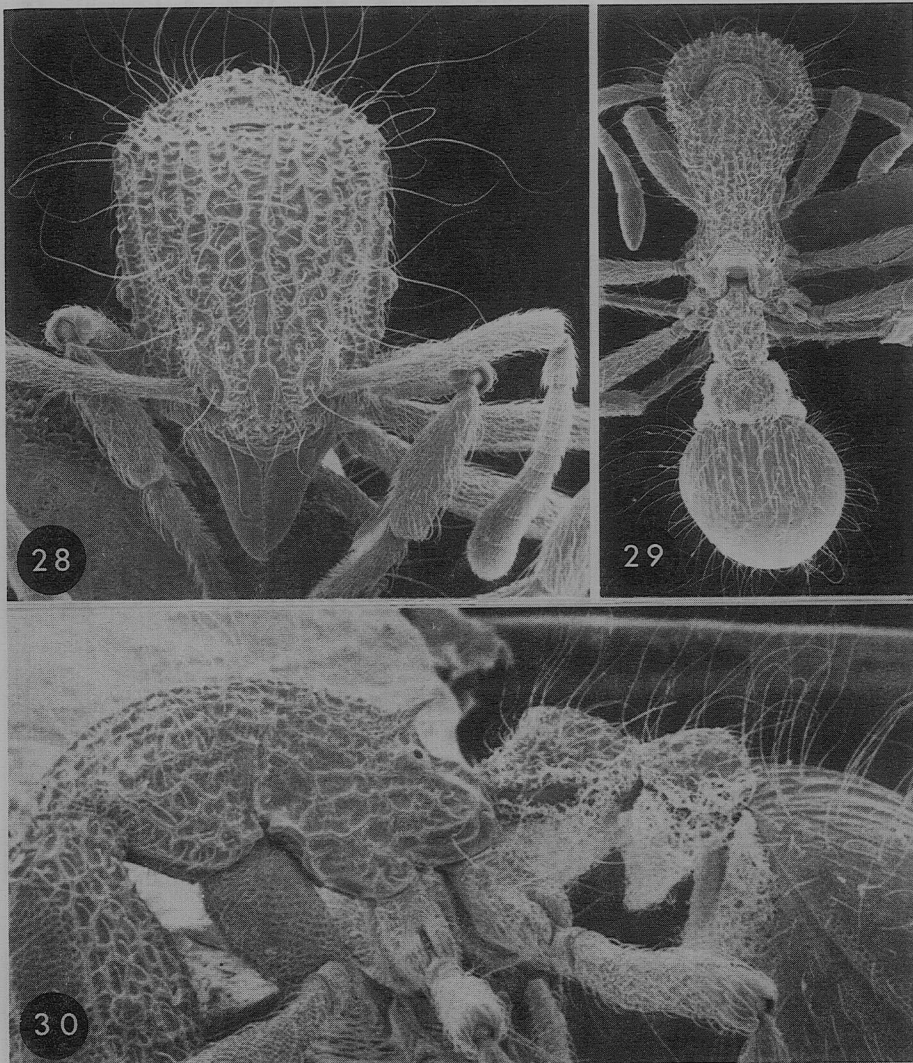


discussed by Wilson (1958, 1959). I have seen the following additional material. PAPUA NEW GUINEA: MADANG PROVINCE: *Mt Hanseman*, 3 workers, (L. Biró, 1901, HNM, ANIC). *Stephansort* (= Bogadjim) worker, dealate female, (L. Biró 1898, HNM). MOROBE PROVINCE: *Bulolo*, dealate female with larva and worker pupa, 'red-rotten' log, 2800 ft (BBL, 1.i.1971). *c. 16 km NW. of Lae* ('Timber Track'), 3 dealate females, 21 workers, in 4 berlesates, *c. 220 m* (RWT, 12.vi.1972, ANIC berlesates 392-4). *Near Lae*: 400 ft above Bumpu Creek; 2 workers, leaf litter (BBL, 5.i.1968); 7 workers in 2 berlesates, *c. 50 m* (RWT,



Figures 28-30. *Dacetinops solivagus*, holotype worker, standard views. HW 0.54 mm; Pronotum width 0.44 mm; WL 0.83 mm.