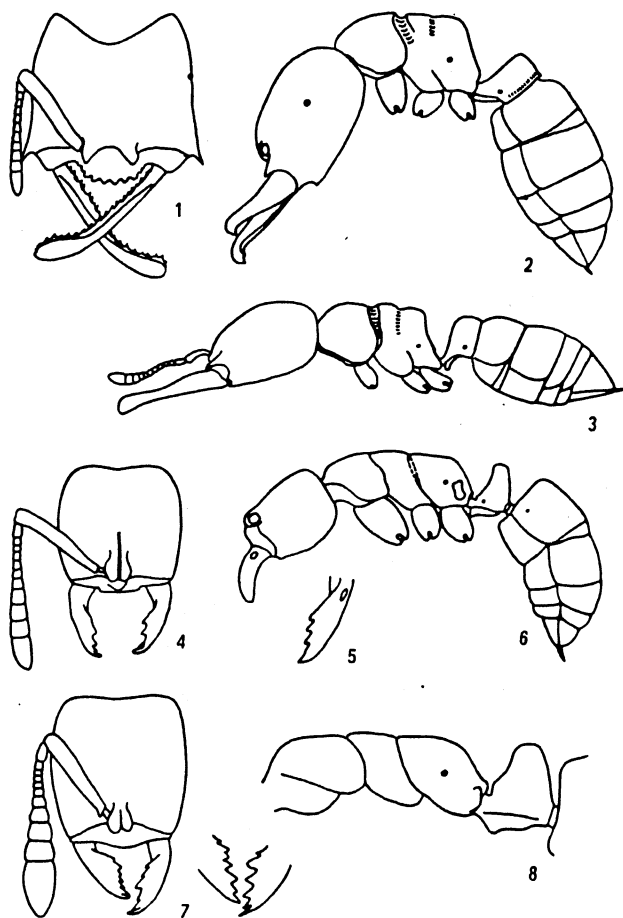


Bingham, 1903. The Fauna of British India including Ceylon and Burma. Hymen. 2: 35.

2 *Mystrium oculatum* sp. nov. (Figs. 1-2)

Holotype worker: TL 4.7, HL 1.25, HW 1.33, CI 106, SL 0.75, SI 57, PW 0.68, AL 1.25, ED 0.05, ML 1.35. Head slightly wider than long, much broader in front than in the post. Occipital margin deeply and roundly emarginate. Occipital corners extruding. Anterior 2/3 of the lateral margin straight, the posterior 1/3 narrowed posteriorly. Anterolateral corner of head produced into an acute spine. Central dorsum of head flat. Mandibles long and linear, the basal 2/3 straight, apical 1/3 incurved, apex slightly expanded; dorsum has a longitudinal carina; inner margin with 2 rows of hamulus-like denticles, each row with about 12 denticles; apical tooth hooked, ventrally curved. Central portion of clypeus flat, depressed; anterior margin roundly extruded in the middle, with a row of teeth; lateral portion of clypeus extended into a blunt angle at the base of mandible. Frontal lobes small, frontal carinae absent. Antennae with 12 joints: scape falling short of the occipital corner by about 1/3 of its length; flagellum incrassate towards apex, the apical 4 joints formed a weak club. Eyes very small, situated in the lateral margin and behind the middle line of the head, each with 5-6 ommatidia. In dorsal view, pronotum and propodeum broad, mesonotum constricted. In profile view, dorsum of alitrunk about at the same level, promesonotal



Figs. 1-8 Workers of *Mystrium* and *Cryptopone*
 1-2. *Mystrium oculatum* sp. nov.; 3. *M. camillae* Emery
 (after Taylor); 4-6. *Cryptopone recticlypea* sp. nov.;
 7-8. *C. typhlos* (Karawajew) (after Karawajew).
 1, 4, 7. Head in full face view; 2, 3, 6, 8. Body in profile
 view; 5. Mandible in dorsal view.

view, dorsum of alitrunk about at the same level, promesonotal