

## RESULTS AND DISCUSSION

*Neoblepharidatta* gen. nov.

Type species: *Neoblepharidatta nayana* sp. nov. by monotypy.

**De alate female:** Antennae 11 jointed with a distinct 2-segmented club; eyes very small formed of two ommatidia; frontal lobes extended forwards, to form two broad, rounded lamina (Fig. 1, 3); in full face view. cheeks hidden under these lamina; clypeus

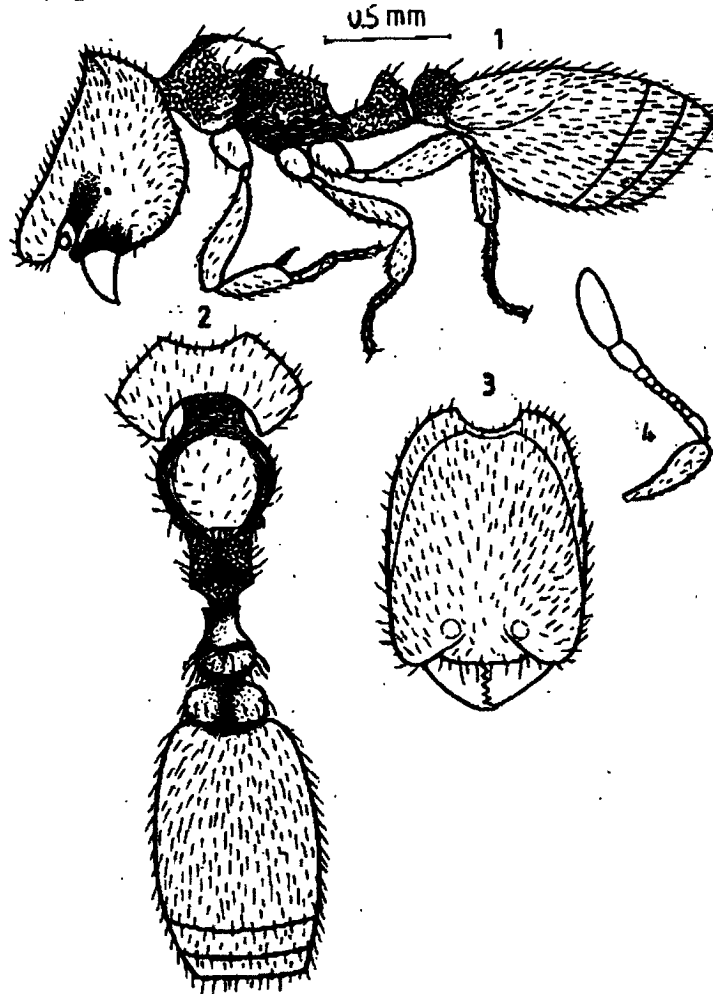


Fig. 1-4 *Neoblepharidatta nayana* sp. nov. 1. Body profile, 2. Body dorsal view, 3. Head front view, 4. Antenna.