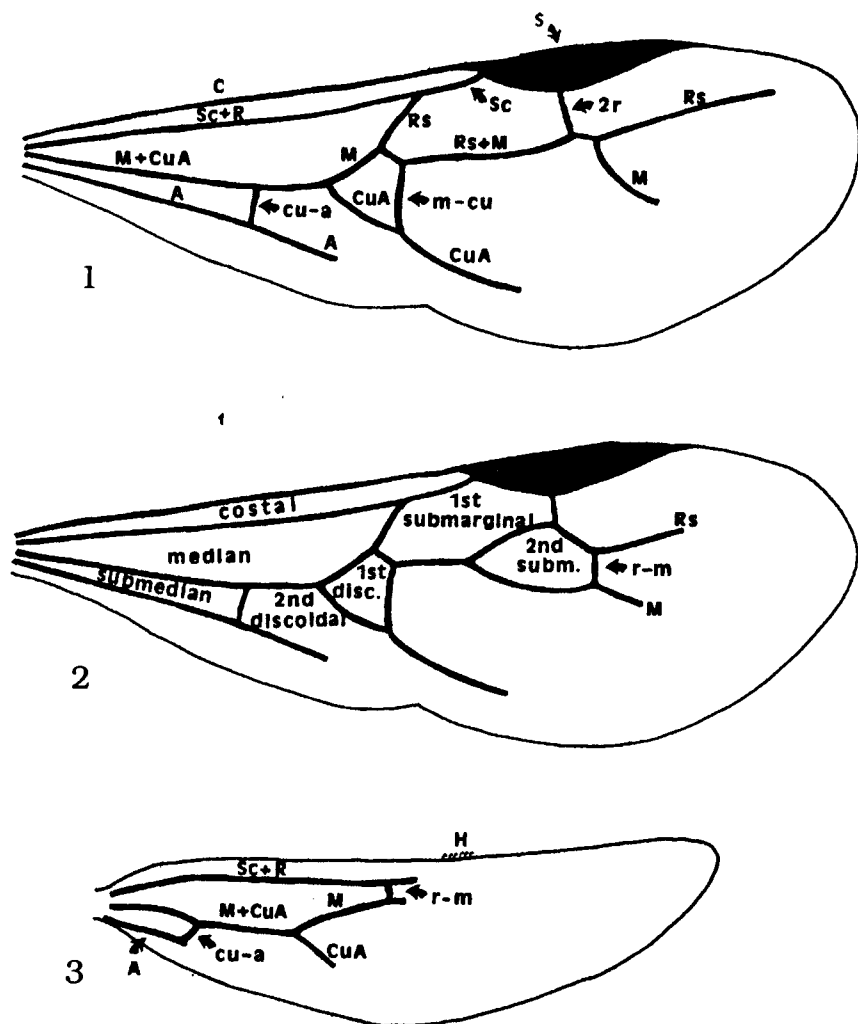


Appendix: Figures



Figs. 1 - 3. Typical wing venation for *Stenamma* species. 1. Veins of forewing. A — Anal, C — Costal, CuA — Cubito-Anal, cu-a — cubital to anal cross vein, M — Median, m-cu — medio-cubital cross vein, R — Radial, 2r — radial cross vein, RS — Radial sector, S - Stigma (pterostigma), Sc — Subcostal. 2. Cells of forewing. 1st disc. — 1st discoidal, 2nd subm. — 2nd submarginal. Veins as in Fig. 1. 3. Veins of hindwing. H — Hamuli. Veins as in Fig. 1. Magnification of these figures is variable.