

Fig. 2. Alas delanteras de hembras. A. *A. cubana*. B. *A. insularis*.
Fig. 2. Females forewings. A. *A. cubana*. B. *A. insularis*.

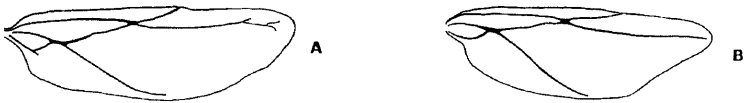


Fig. 3. Alas posteriores de hembras. A. *A. cubana*. B. *A. insularis*.
Fig. 3. Females hindwings. A. *A. cubana*. B. *A. insularis*.

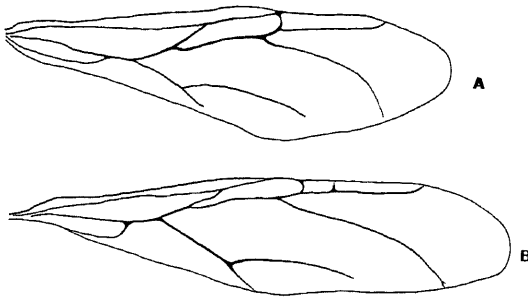


Fig. 4. Alas delanteras de machos. A. *A. cubana*. B. *A. insularis*.
Fig. 4. Males forewings. A. *A. cubana*. B. *A. insularis*.

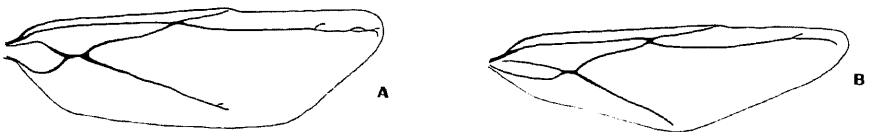


Fig. 5. Alas posteriores de machos. A. *A. cubana*. B. *A. insularis*.
Fig. 5. Males hindwings. A. *A. cubana*. B. *A. insularis*.