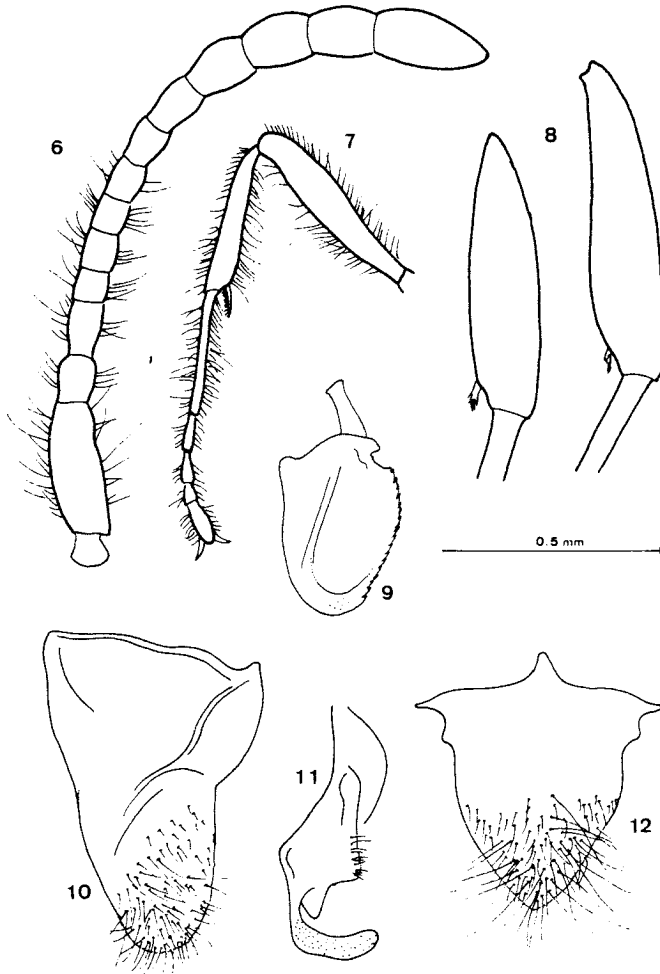


Male (figs. 4, 6, 7, 9-12)

Lg 4.2-4.6 mm; head and thorax brownish; coxa, trochanter, femur, tibia, petiole, postpetiole and gaster slightly lighter;

antennae, mandibles and tarsi brownish yellow. Abundant long hairs on all appendages, longer than their maximum width; hind tarsal hairs subequal on all



**Figs. 6-12. *Myrmica cagnianti* n. sp.: 6. Male antenna; 7. Front leg of male; 8. Mid and hind tibiae of worker showing reduced spurs, pilosity omitted; 9. Aedeagus; 10. External paramera; 11. Volsella; 12. Subgenital plate.**

***Myrmica cagnianti* sp. n.: 6. Antena del macho; 7. Pata anterior del macho; 8. Tibias media y posterior de la obrera mostrando espolones reducidos, se omite la pilosidad; 9. Edeago; 10. Parámetro externo; 11. Volsella; 12. Placa subgenital.**