

distinctly pointed, dentiform (seen in profile). Anterior clypeal margin straight, but shallowly notched medially. Frons wide; frontal carinae very feebly curved, but not curved outwards; antennal sockets not surrounded by rugae. Eyes oval and convex, situated distinctly anterior to mid point of head sides. Antennal scapes very long, distinctly longer than head, and gradually and weakly curved at their bases; funicular joints distinctly longer than broad; apical club 4-jointed.

Alitrunk relatively long and narrow; metapleural lobes form sharp tooth apically. Propodeal spines long, projecting backwards and curving downwards, and more or less parallel (seen from above). Petiole long, low and narrow, but relatively less than in workers; its anterior peduncle long, with slightly concave anterior surface, node long and convex dorsally (seen in profile). Postpetiole high, short and narrow with more or less straight anterior surface and convex posterior surface, in profile forming flattened arch with its apex distinctly posterior to the mid point.

Generally specimen coarsely rugose with the surfaces between the rugae smooth and shiny. Rugae of head dorsum very coarse with only four on central frons; all rugae on head dorsum straight (not sinuous). Clypeus coarsely rugose; mandibles coarsely

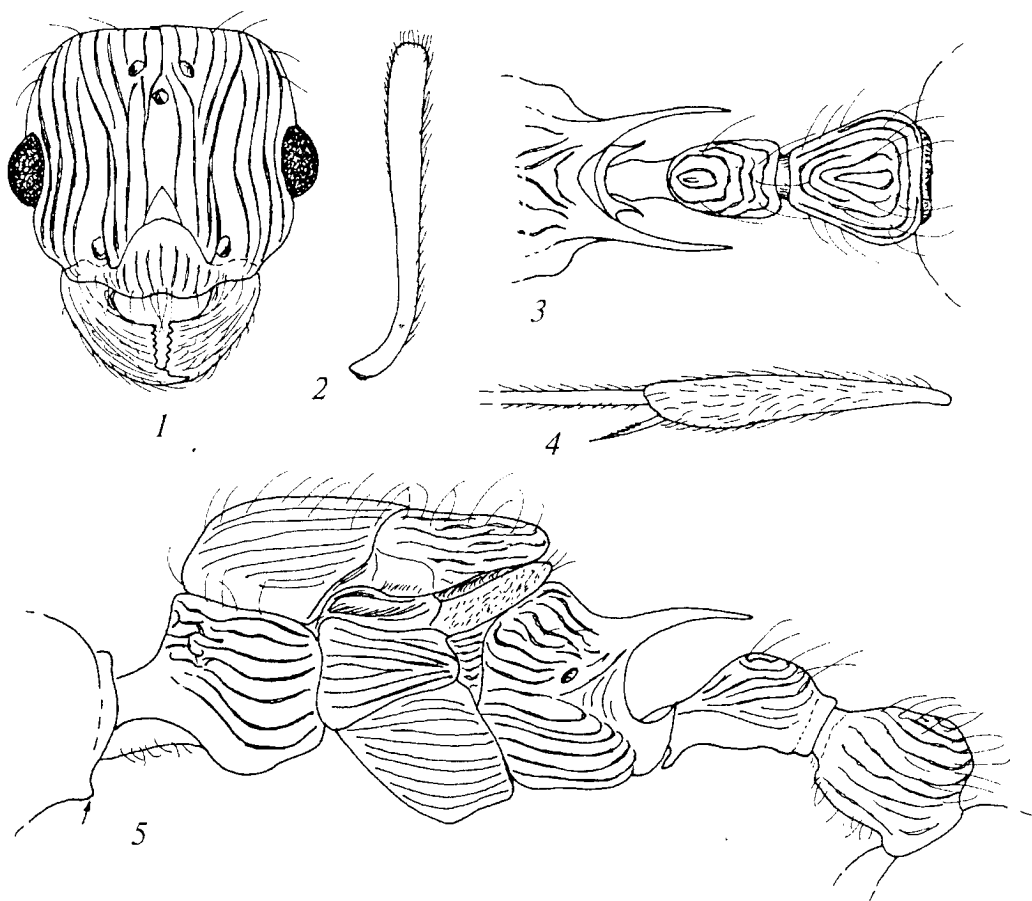


Fig. 1. Details of structure of female *Myrmica rita*: 1 — head, frontal view; 2 — antennal scape; 3 — propodeal spines and waist from above; 4 — hind tibia; 5 — alitrunk and waist in profile.

Рис. 1. Детали строения тела самки *Myrmica rita*: 1 — голова спереди; 2 — скапус антенн; 3 — шипы проподеума и стебелек сверху; 4 — задняя голень; 5 — грудь и стебелек в профиль.